

INTERIOR ROLL-ON PAINT
2500 SCRUB CYCLES
 WATERBASED | ACRYLIC LATEX | NO ODOUR

APPLICATION GUIDE

LEVEY TRUE 2500®

Quality ingredients make this eggshell finish both environmentally smart and durable. Levey True 2500® is manufactured to withstand high abuse environments, while looking it's best. This low maintenance, cleanable quality makes Levey True 2500® the premier choice for commercial spaces.

WHERE TO USE

True 2500® can be used on most interior surface applications. It is especially suited for use on walls in corporate offices, hotels, entertainment facilities and most other commercial buildings. It is not designed for use on floors, decks, or other horizontal surfaces. Do not use in areas of high heat, corrosive or chemically abrasive environments.

SURFACE PREPARATION

New Surface: Surface must be clean and dry. Remove all dust, dirt, mold, mildew and similar residue. Newly plastered walls must be allowed to dry thoroughly before painting. **Old Surfaces:** Clean surface completely. Remove all loose old paint, grease, oil, dirt, mold, mildew, wax and other contaminants. Lightly sand and de-gloss areas. Spot prime and sand all patched areas. **Masonry:** Allow all new masonry surfaces adequate time to fully cure before application of True 2500. Remove any efflorescence. Apply only on a clean, dry surface. Two coats are recommended.

APPLICATION

Stir contents thoroughly. Apply True 2500® with a brush, roller or spray gun. Keep a wet edge with a 50% overlap to avoid lap marks. Apply a test wall using selected application technique and present for approval prior to final application. Apply True 2500® only when temperature is between 50° F and 90° F. (Primer: On new sheetrock use prebase primer / sealer. For painting over glossy surfaces use bonding primer)

Coverage: On smooth surfaces, approximately 350 - 400 sq. ft. per gallon. Slightly less for rough surfaces.

Dry Time: Dry to the touch in 1 hour. Full cure in 7 days. **WARNING –** This product must not be allowed to freeze!

Thinning: Do not thin this product unless absolutely necessary! If required, thin only with a small amount of water.

Clean-Up: Clean with soap and hot water.

FIRST AID

SKIN CONTACT - Wash immediately with water, then with soap and water. Remove contaminated clothing. **EYE CONTACT -** Immediately flush with large amounts of water, especially under lids, for at least 15 minutes. Obtain medical attention immediately. **INGESTION -** Obtain medical attention immediately. **INHALATION -** May cause physical discomfort. Remove to fresh air. Restore and support continued breathing. If discomfort persists or any breathing difficulty occurs, seek medical attention. Refer to product MSDS.

IMPORTANT-TEST BEFORE PROCEEDING

Prepare a sample wall, test or mock-up (not to exceed one gallon) under job conditions before proceeding with the complete Levey True 2500® system application to determine suitability of appearance. Once materials are applied, they are considered to be accepted and Levey Industries INC. will assume no further responsibility

CAUTION

Do Not Take Internally Close Container After Each Use Keep Out Of The Reach Of Children Use Adequate Ventilation

DISPOSAL - CONTAINS NO CHROMIUM, LEAD OR MERCURY. DISPOSAL OF CONTAINERS SHOULD BE IN ACCORDANCE WITH APPLICABLE FEDERAL, STATE AND LOCAL LAWS AND REGULATIONS. CONTACT YOUR SANITATION DEPARTMENT OR HOUSEHOLD HAZARDOUS WASTE COORDINATOR FOR INFORMATION CONCERNING REUSE, RECYCLING OR DISPOSAL OR UNUSED PRODUCT.

ANALYSIS

Acrylic Resin — Proprietary
 Ceramic SPHERES — CAS 66402-68-4
 KAOLIN — CAS 1332-58-7
 NEPHELINE SYNITE — CAS 37244-96-5
 PROPYLENE GLYCOL — CAS 57-55-6
 TITANIUM DIOXIDE — CAS 13463-67-7
 WATER — CAS 7732-18-5

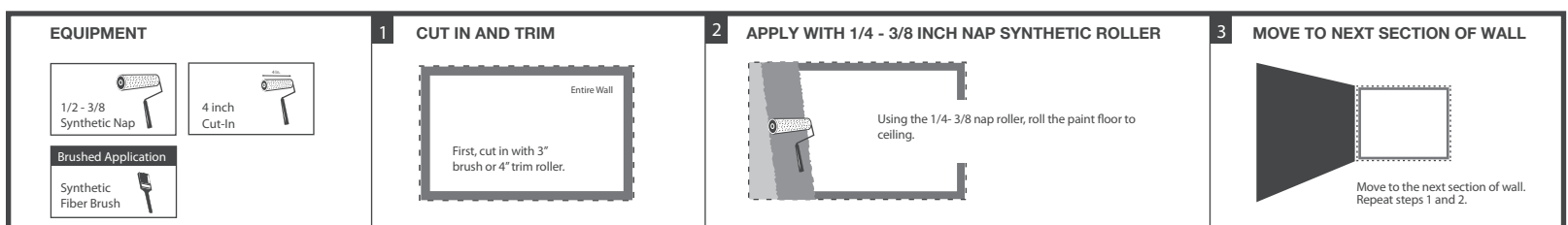
BRUSHED / ROLLED APPLICATION

Roller Cover: 1/4" - 3/8" Nap Synthetic Roller. 4" roller for cut-ins.

Brush: Synthetic fiber brush for brushed application or cut-ins.

Two Coats: Each coat consists of rolling True 2500 paint on the wall with a 1/4 - 3/8" Nap Synthetic Roller.

Finish Level: Drywall level 3.



SPRAYED APPLICATION

HVLP Sprayer: Commercial grade 4 stage HVLP equipment equivalent to a CapSpray 9100 with a #3 nozzle or a Graco 4900 with a #3 nozzle OR EQUIVALENT

Conventional Sprayer: BINKS® 2100 - 63 PB External Mix Air Cap, 66 SS Fluid Nozzle and 565 Needle, 2 Gallon Pressure Pot OR EQUIVALENT

Airless Sprayer: Commercial grade sprayer equivalent to a Graco 395 or larger with a minimum tipsize of .015 - .017 and minimum pressure of 2000 psi.

Finish Level: Drywall level 3. (All approved samples/control samples are spray applied over a prepared level 5 substrate surface.)

