

## CARTHAGE PRODUCT SPECIFICATIONS

**Application**  
Upholstery

**Content**  
100% Polyester

**Backing**  
Acrylic

**Width**  
54"

**Repeat**  
N/A

**Roll Length**  
App. 50yds

**General Characteristics**

- Abrasion: 100,000 rubs (ASTM D4157 Wyzenbeek)
- Colorfastness to Light: 40+ hours (AATCC-16)
- Meets all ACT Heavy Duty Performance Guidelines

**Flammability**

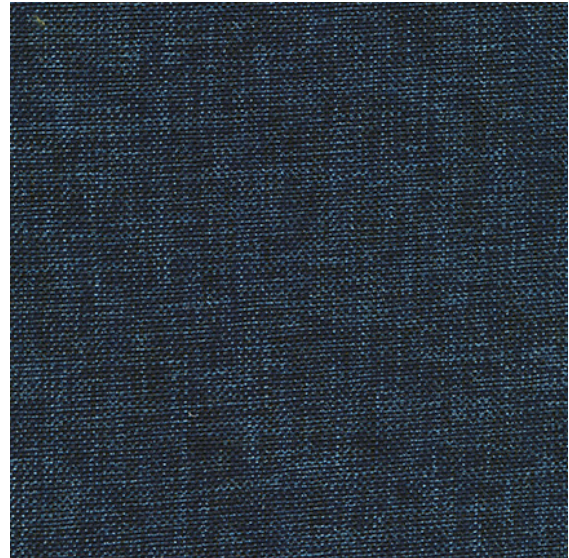
CA Bulletin 117-2013; UFAC/NFPA-260

**Cleaning**

S

**Environmental**

No added FR/Anti-Bacterial



Bay



Pebble



Chablis



Envy



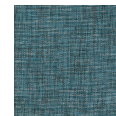
Charcoal



Ridge



Coral



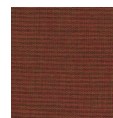
Reef



Earth



Saffron



Bordeaux



Chocolate

**Warranty**

Please refer to our Terms of Sales for warranty information.

- Multiple factors affect fabric durability and appearance retention, including end-user application and proper maintenance.

Wyzenbeek results above 100,000 double rubs have not been shown to be a reliable indicator of increased fabric lifespan.



ACT® Registered Certification Marks